

Quiz 3

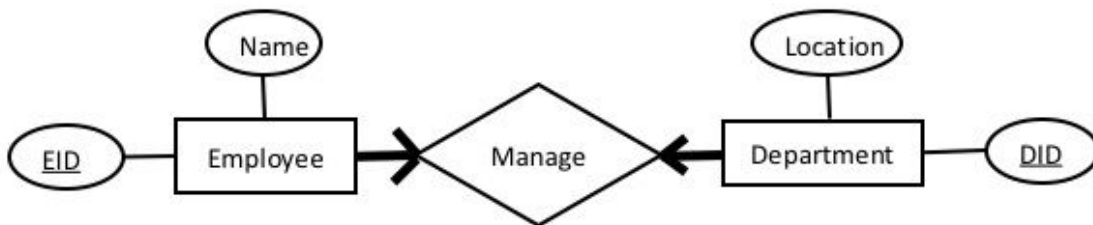
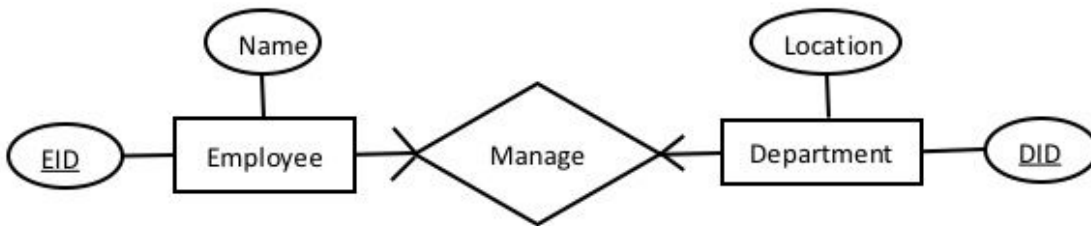
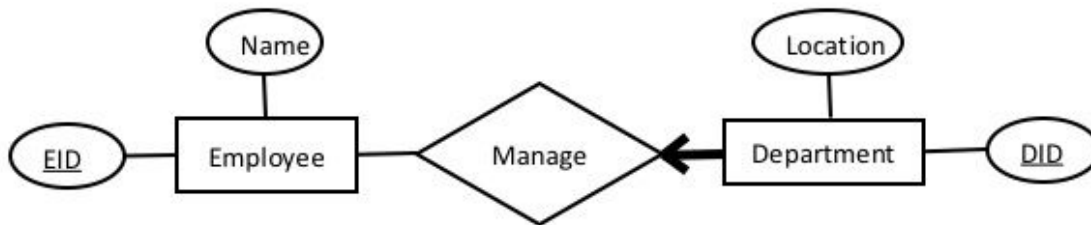
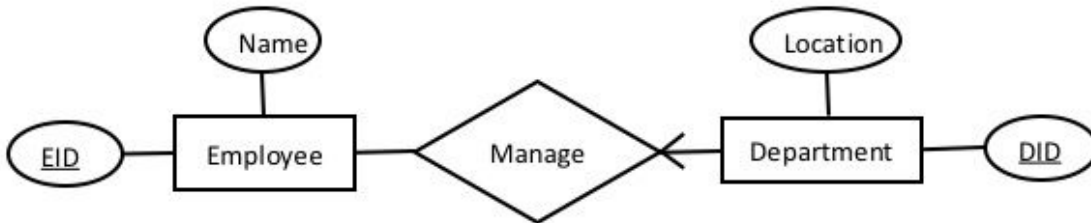
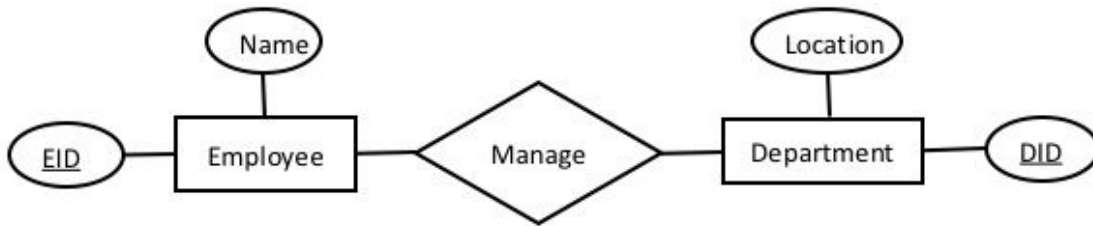
Score (out of 10) _____

Taken by: Name _____ Student ID _____

Graded by: Name _____ Student ID _____

Each question is worth 2 points. You have 10 minutes.

Translate each of the following ER diagrams into SQL. Pay attention to the constraints.



1. CREATE TABLE Employee (eid INTEGER, name VARCHAR(20), PRIMARY KEY (eid));

```
CREATE TABLE Department (did INTEGER, location VARCHAR(20), PRIMARY KEY (did));
CREATE TABLE Manage (eid INTEGER,
    did INTEGER,
    PRIMARY KEY (eid,did),
    FOREIGN KEY(eid) REFERENCES Employee ON DELETE CASCADE,
    FOREIGN KEY(did) REFERENCES Department ON DELETE CASCADE);
```

2. CREATE TABLE Employee (eid INTEGER, name VARCHAR(20), PRIMARY KEY (eid));
CREATE TABLE Department (did INTEGER, location VARCHAR(20),
 eid INTEGER,
 PRIMARY KEY (did),
 FOREIGN KEY(eid) REFERENCES Employee ON DELETE **SET NULL**);

3. CREATE TABLE Employee (eid INTEGER, name VARCHAR(20), PRIMARY KEY (eid));
CREATE TABLE Department (did INTEGER, location VARCHAR(20),
 eid INTEGER **NOT NULL**,
 PRIMARY KEY (did),
 FOREIGN KEY(eid) REFERENCES Employee ON DELETE **CASCADE**);

4. CREATE TABLE Employee (eid INTEGER, name VARCHAR(20),
 did INTEGER,
 PRIMARY KEY (eid),
 FOREIGN KEY(did)REFERENCES Department ON DELETE SET NULL);

```
CREATE TABLE Department (did INTEGER, location VARCHAR(20),
    eid INTEGER,
    PRIMARY KEY (did),
    FOREIGN KEY(eid) REFERENCES Employee ON DELETE SET NULL);
```

5. CREATE TABLE Employee (eid INTEGER, name VARCHAR(20),
 did INTEGER **NOT NULL**,
 PRIMARY KEY (eid),
 FOREIGN KEY(did)REFERENCES Department ON DELETE **CASCADE**);

```
CREATE TABLE Department (did INTEGER, location VARCHAR(20),
    eid INTEGER NOT NULL,
    PRIMARY KEY (did),
    FOREIGN KEY(eid)REFERENCES Employee ON DELETE CASCADE);
```