

Group ID: Names:

Student IDs:

CS122A HW1

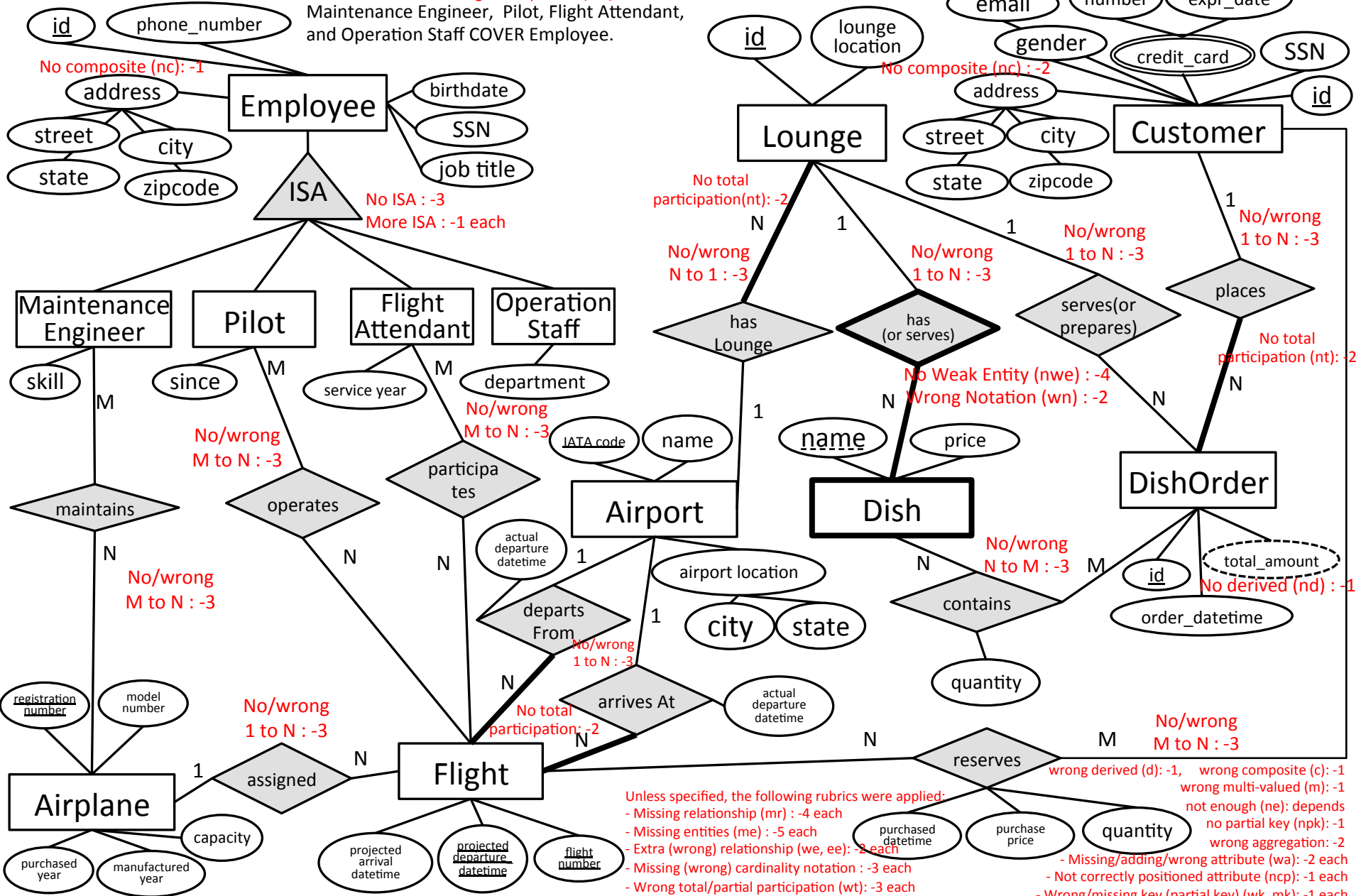
Common attributes of Emp on subclasses: each -2 (max -6)

Wrong cover stmt (wc) : -3
(No cover stmt is OK.)

Wrong overlap stmt (wo) : -3

No composite (nc) : -1
No multivalued (nm) : -1

Maintenance Engineer, Pilot, Flight Attendant,
and Operation Staff COVER Employee.



No/wrong
M to N : -3

No/wrong
M to N : -3

No/wrong
1 to N : -3

No total
participation(nt) : -2

No/wrong
N to 1 : -3

No Weak Entity (nwe) : -4
Wrong Notation (wn) : -2

No/wrong
1 to N : -3

No total
participation (nt) : -2

No/wrong
N to M : -3

No derived (nd) : -1

No/wrong
M to N : -3

- Unless specified, the following rubrics were applied:
- Missing relationship (mr) : -4 each
 - Missing entities (me) : -5 each
 - Extra (wrong) relationship (we, ee) : -2 each
 - Missing (wrong) cardinality notation : -3 each
 - Wrong total/partial participation (wt) : -3 each
 - Setting a wrong weak Entity and its relationship: -3 each
 - wrong derived (d) : -1,
 - wrong composite (c) : -1
 - wrong multi-valued (m) : -1
 - not enough (ne): depends
 - no partial key (npk): -1
 - wrong aggregation: -2
 - Missing/adding/wrong attribute (wa) : -2 each
 - Not correctly positioned attribute (ncp) : -1 each
 - Wrong/missing key (partial key) (wk, mk) : -1 each
 - Extra / Missing / Wrong line (wl) : -1 each